



James
A. King

Wastewater Treatment Facility

The WWTF gets its name from long time operator and plant manager, **James A. King.**

WWTF Total Property Area

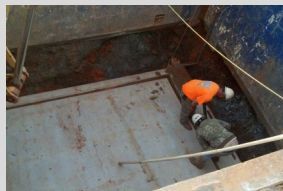
68.34 acres

Notable Dates

- 1957** Facility On Line
- 1973** Plant Expansion
- 1983** Facility Upgraded
(Administration Building, EQ Basin, Headworks, Round Primary and Secondary Clarifiers, Organic and Nitrification Filters, and Aerobic Digestion.)
- 1998** Belt Filter Press added for sludge dewatering
- 2001** Switched to Bleach from Chlorine gas for wastewater effluent disinfection.
- 2012** Installation of grey water pump station for use with "green" energy power plant cooling towers.

2013-2014

Construction began in 2013 for a new WWTF capable of treating 2.4 million gallons of wastewater per day. This facility will replace the current 1.2 MGD plant and meet the demands of the City's growing populace and the State's stringent regulations. The new facility is expected to be completed by October 2014.



Outline of New 2.4 MGD WWTF

Headworks

- New spiral screen and grit removal system
- 3 Flygt submersible influent pumps

Aeration Basins

- Two aeration trains each capable of treating 1.2 MGD flow. Total volume– 1.7 MG
- One Anaerobic tank 0.15MG designed for biological Phosphorus removal.

Clarifiers

- Two 75 ft diameter clarifiers each with a volume of 0.535 MG.
- Main splitter box with adjustable gates to distribute flow to each clarifier.

Solids Handling

- New Return/Waste sludge pumping station.
- One 83 ft diameter, 0.574 MG aerobic digester.
- New solids dewatering building with maintenance shop.

Disinfection

- Trojan Ultra Violet disinfection system.

Proudly Operated
and Maintained by:



www.esginc.net

Key Personnel:

Jason Shirey - Public Works and Utilities Director

Brandon Lewis - Project manager

Dexter Thornton - Wastewater Class II Operator

Mike Hilyer Jr. - Wastewater Class III Operator