



JANET T. MILLS
GOVERNOR

STATE OF MAINE
DEPARTMENT OF MARINE RESOURCES
MARINE RESOURCES LABORATORY
P.O. BOX 8, 194 MCKOWN POINT RD
W. BOOTHBAY HARBOR, MAINE
04575-0008

PATRICK C. KELIHER
COMMISSIONER

October 18, 2022

Pamela Jameson, Town Clerk
P.O. Box J
Waldoboro, ME 04572

Re: Conservation Closure(s)/Opening(s)

Dear Ms. Jameson:

This is to acknowledge the following conservation closure/opening request(s). **New requests are in BOLD.** This closure is for soft shell clams only.

Effective	End	Shellfish Area	Status
10/28/2022	04/28/2023	Upper East Side – east of a line beginning at a red painted post located on the east shore (opposite from a red painted post located approximately 220 yards south of a prominent point south of Laila Ln) running southwest to red nun “24”, then extending south to red nun “22”, then running southeast to a red painted post on the southwest most point of land known as Hoffse Point	Closed

This office approves of the Town of Waldoboro's conservation measures. We appreciate your efforts to keep us informed on your conservation activities. If I can be of further assistance, please don't hesitate to contact me.

Sincerely,

Denis-Marc Nault
Shellfish Program Supervisor

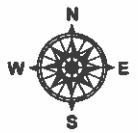
CC: Hannah Annis, Area Biologist
Lt. Daniel White, Marine Patrol Division I



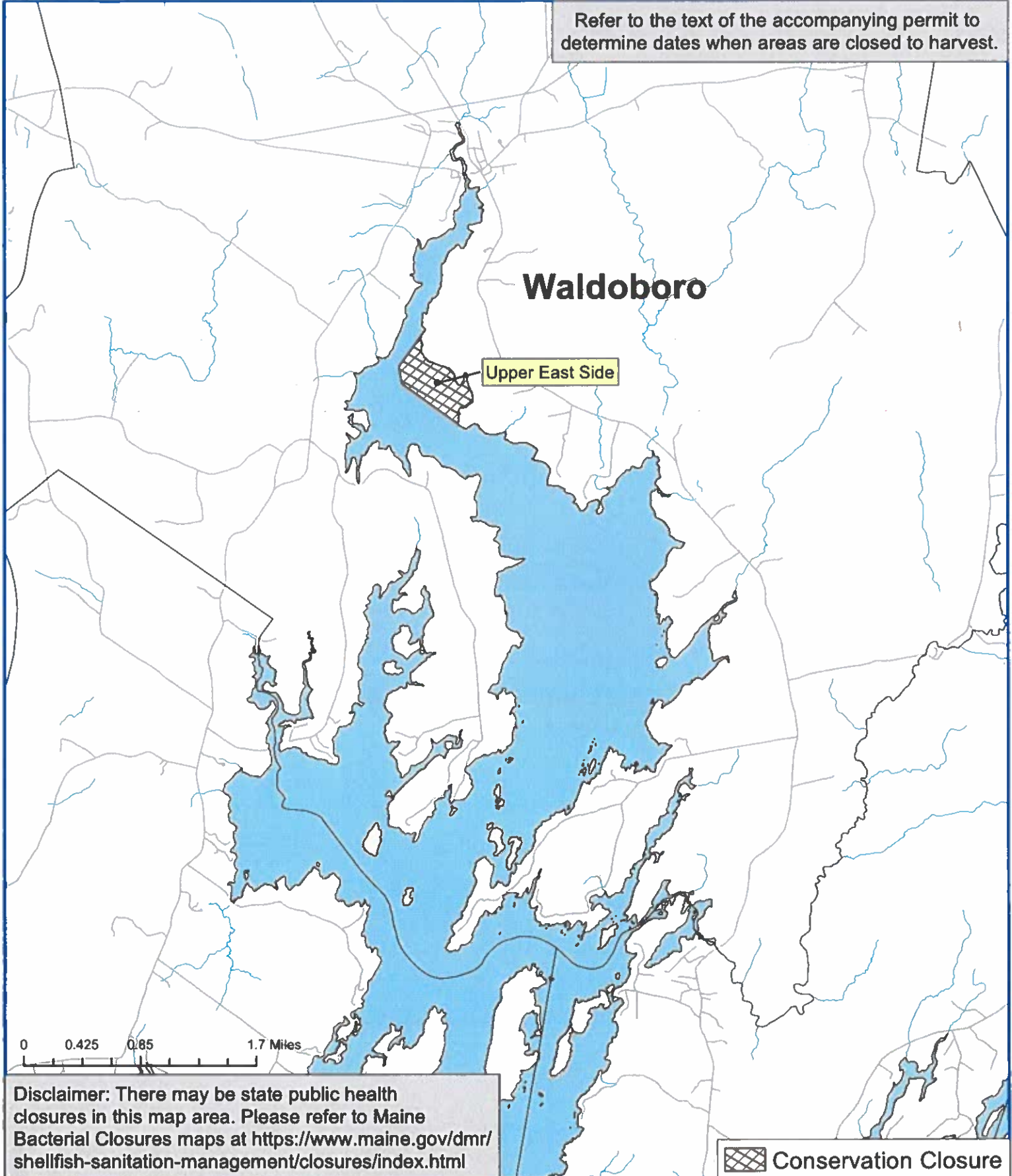
Maine Department of Marine Resources

Waldoboro

Municipal Conservation Closures



Refer to the text of the accompanying permit to determine dates when areas are closed to harvest.



Waldoboro

Upper East Side

0 0.425 0.85 1.7 Miles

Disclaimer: There may be state public health closures in this map area. Please refer to Maine Bacterial Closures maps at <https://www.maine.gov/dmr/shellfish-sanitation-management/closures/index.html>

 Conservation Closure