

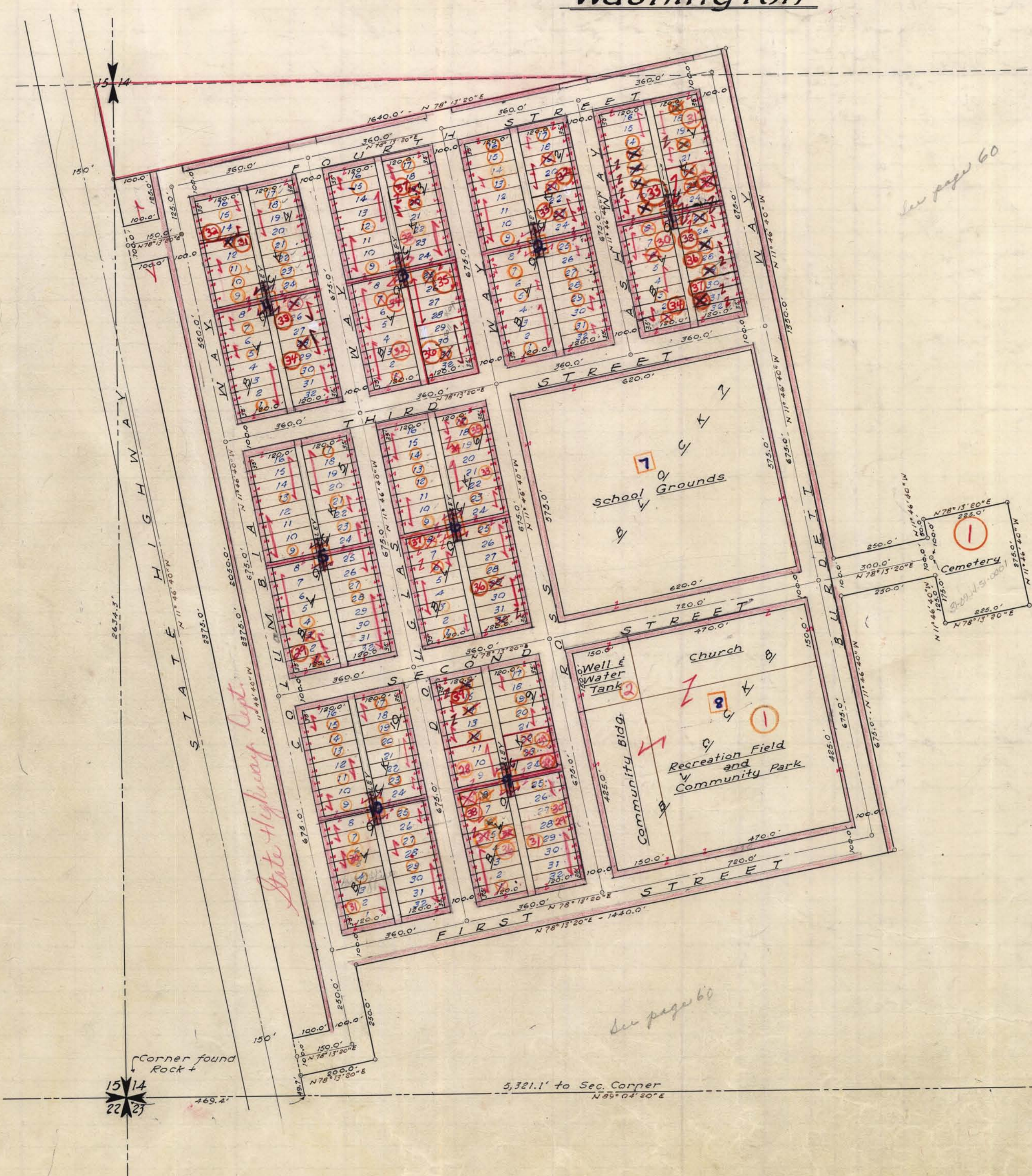
WALLULA TOWNSITE

Washington

14-7-31



54



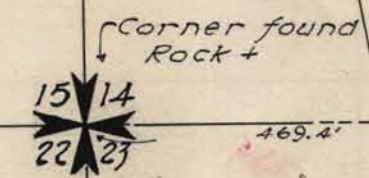
14

T7N R31E W.M.
SCALE 1" = 200'

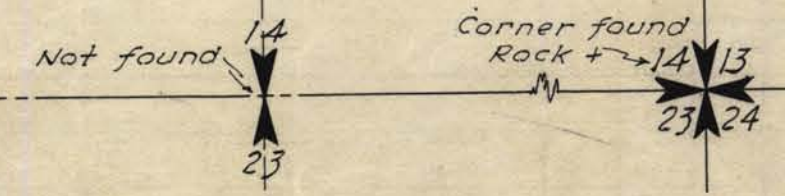
= located 15' strips
4 red 8-15 31 + 8705157

GENERAL NOTES:
 Alleys extending Northerly are 20' wide.
 Alleys extending Easterly are 15' wide.
 Blocks 4, 5 & 10 are for places of business.
 Blocks 1, 2, 3, 6 & 9 are for residences.
 School Grounds = 418,500 sq. feet.
 Well Lot = 22,500 sq. feet.
 Church lot = 70,500 sq. feet.
 Recreational Field & Community Park = 199,750 sq. feet.
 Cemetery = 39,875 sq. feet.
 All street intersections are Monumented.

REFERENCE:
 Photostatic copy of original Plat
 by B. Loyal Smith, Walla Walla County
 Engineer, filed in office of County
 Auditor, Walla Walla County, Washington.



3,321.1' to Sec. Corner
N 85° 04' 20\"/>



See page 60

See page 60