

# TWIN GROVE ACRES 57

(0435)

SEC Range 35-07-35

<sup>20</sup>  
BOOK 76 PAGE 90

<sup>20</sup>  
BOOK 76 PAGE 88

page 6

<sup>20</sup>  
BOOK 76 PAGE 90

NEE SEE 4

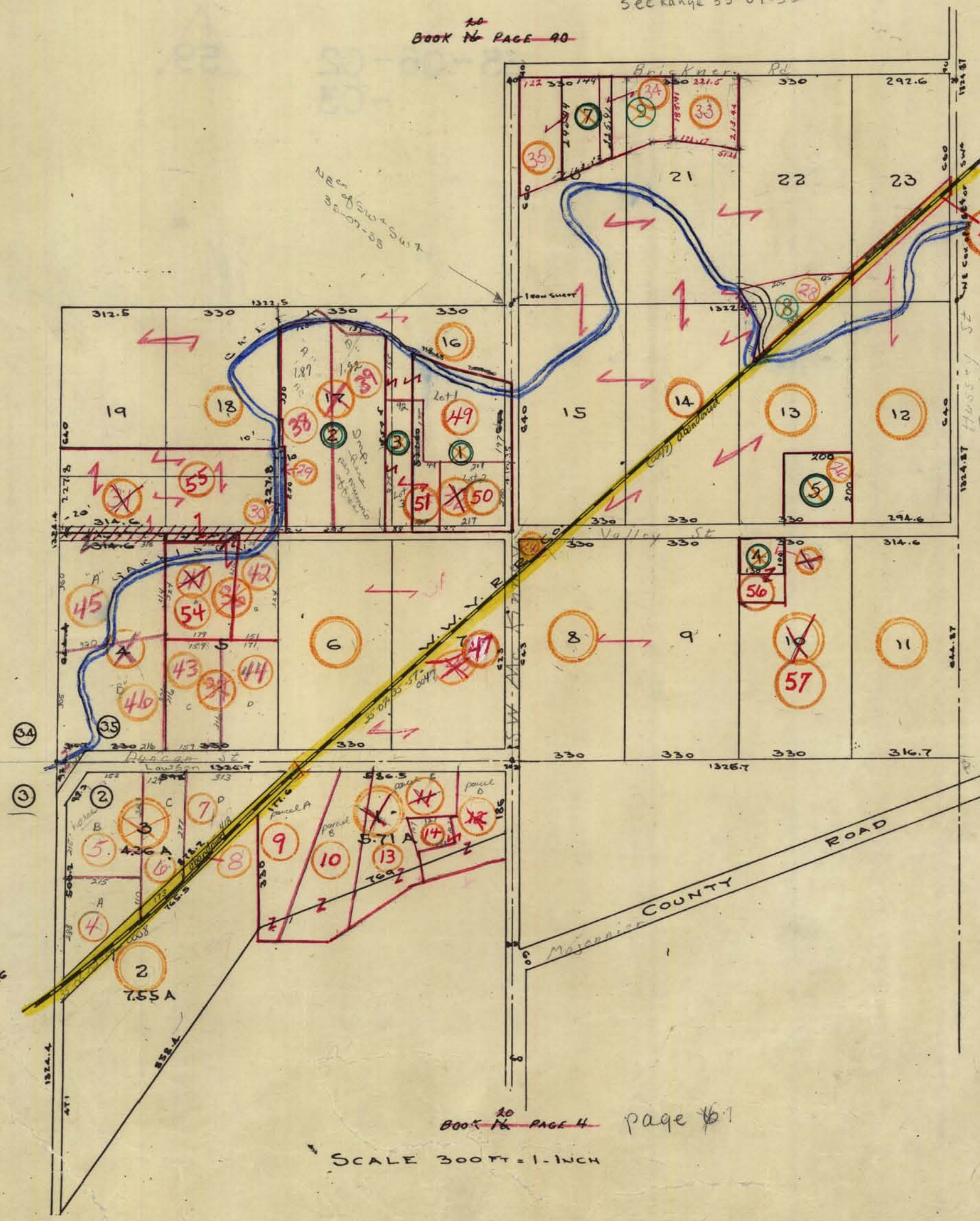
35-07-35

35-06-02

<sup>20</sup>  
BOOK 76 PAGE 6

Valley St  
Hick Knobs Rd  
Grandview St  
COUNTY ROAD

indicates  
abandoned  
railroad



<sup>20</sup>  
BOOK 76 PAGE 4 page 61

SCALE 300 FT = 1 INCH