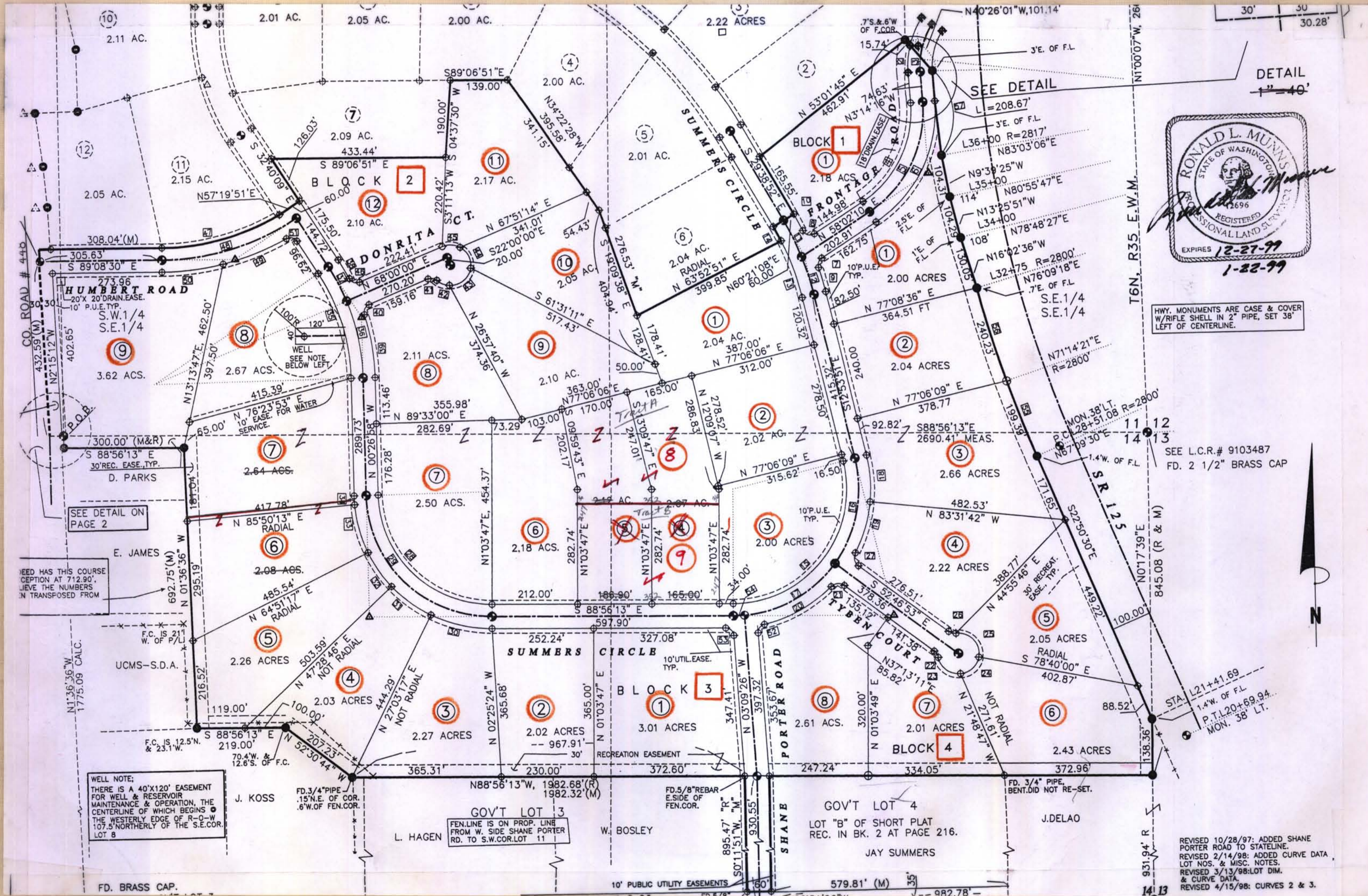


HILLTOP ACRES PHASE 1 AN ADDITION TO WALLA WALLA COUNTY

35-06-11-14



DETAIL
1"=40'

HWY. MONUMENTS ARE CASE & COVER
W/ RIFLE SHELL IN 2" PIPE, SET 38'
LEFT OF CENTERLINE.

SEE L.C.R.# 9103487
FD. 2 1/2" BRASS CAP



REVISED 10/28/97: ADDED SHANE
PORTER ROAD TO STATION LINE.
REVISED 2/14/98: ADDED CURVE DATA,
LOT NOS. & MISC. NOTES.
REVISED 3/13/98: LOT DIM.
& CURVE DATA.
REVISED 4/15/98: CURVES 2 & 3.