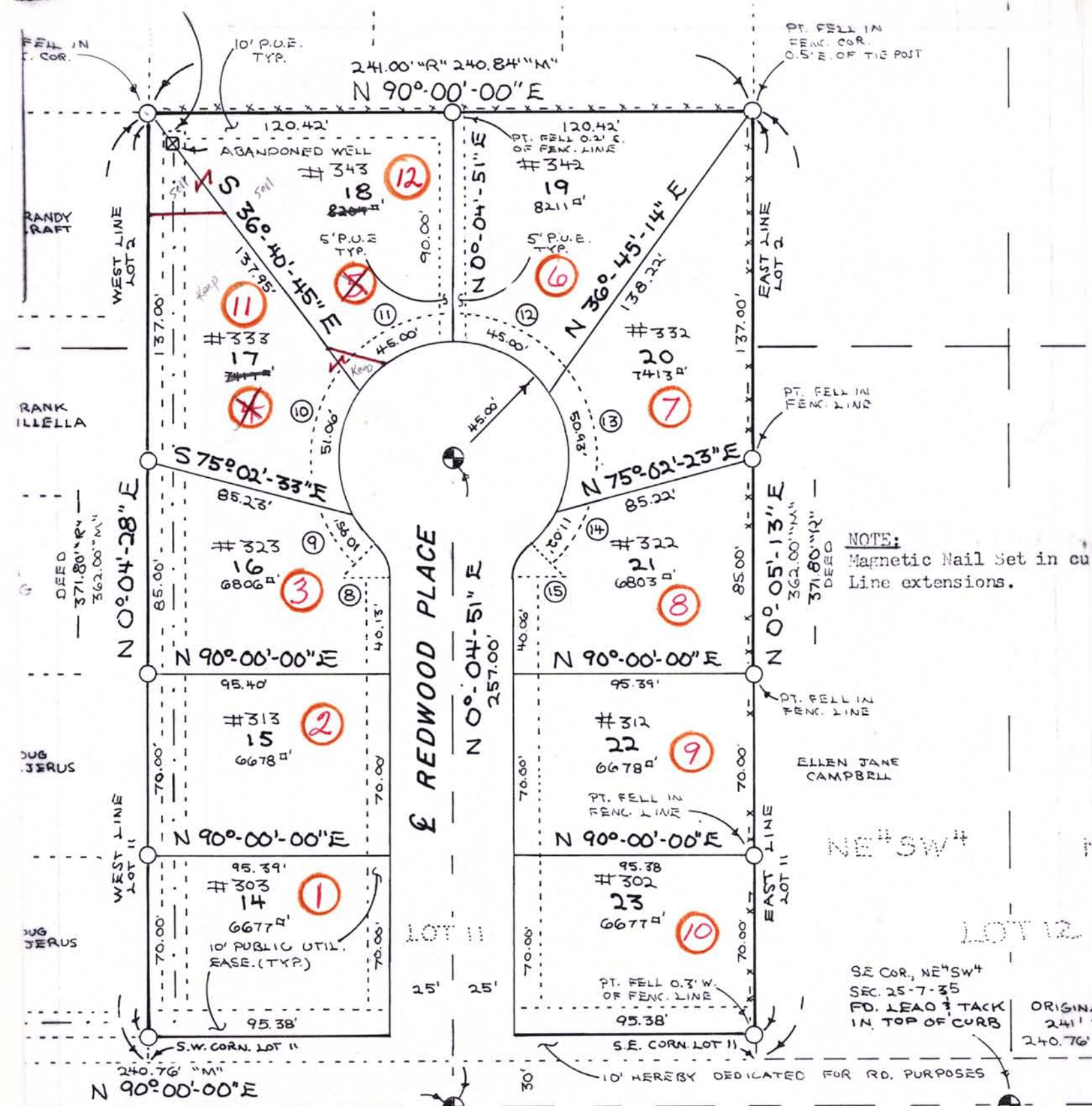
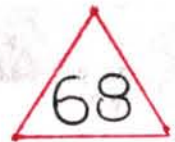


# MAJERUS ADDITION TO COLLEGE PLACE PHASE IV

35-07-25



NOTE:  
Magnetic Nail Set in cu  
Line extensions.

Curve #	Radius	Angle	Length	Ch. L.
⑧	20.00'	116°-11'-04"	16.12'	15.
②	45.00'	13°-52'-22"	10.90'	10.
⑪	45.00'	65°-00'-57"	51.06'	48.
⑬	45.00'	57°-17'-15"	15.00'	13.

35-07-25-68-206

coll