

ARLENE'S ADDITION NO. 2

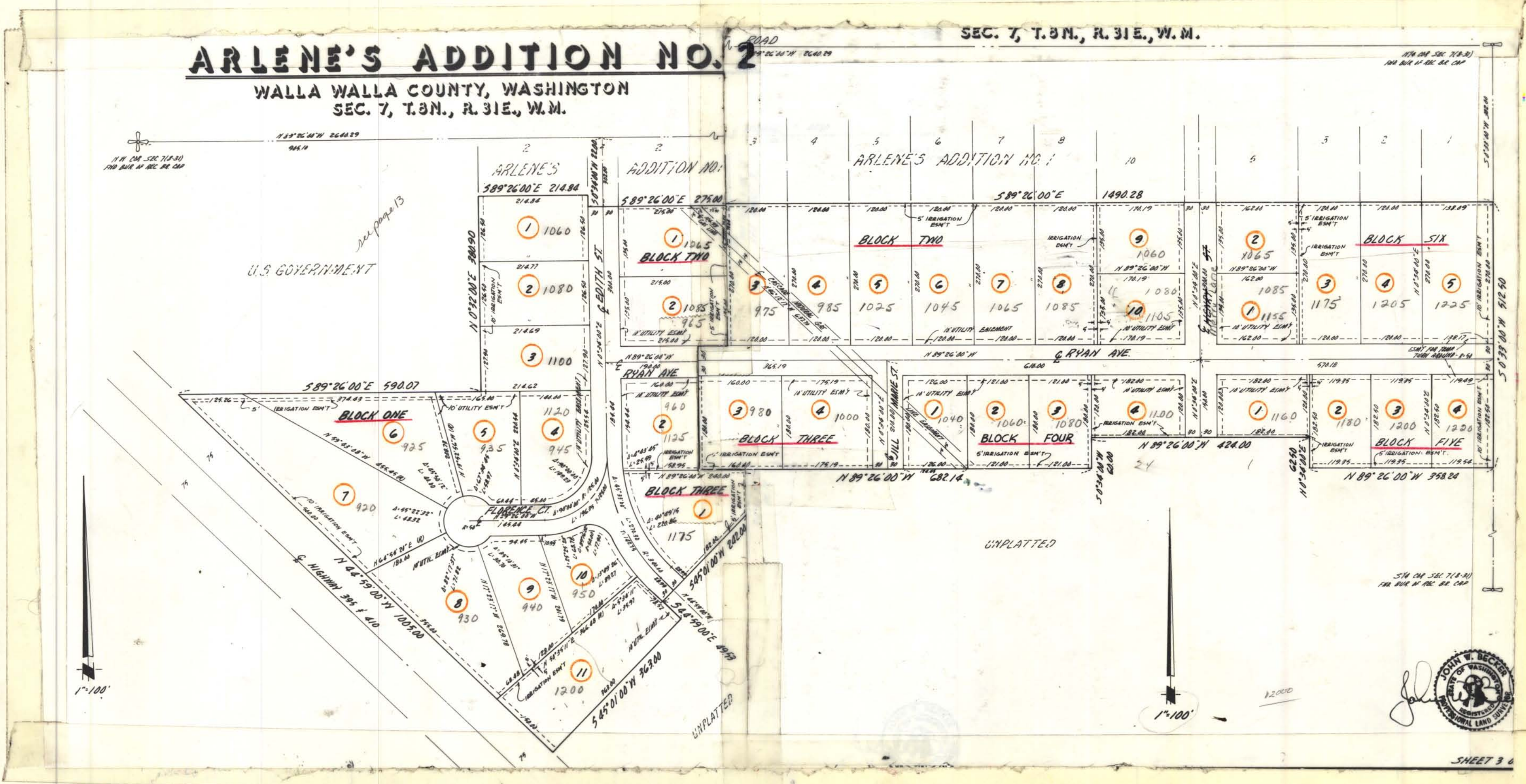
31 08 07



ARLENE'S ADDITION NO. 2

WALLA WALLA COUNTY, WASHINGTON  
SEC. 7, T.8N., R.31E., W.M.

SEC. 7, T.8N., R.31E., W.M.



U.S. GOVERNMENT

UNPLATTED

