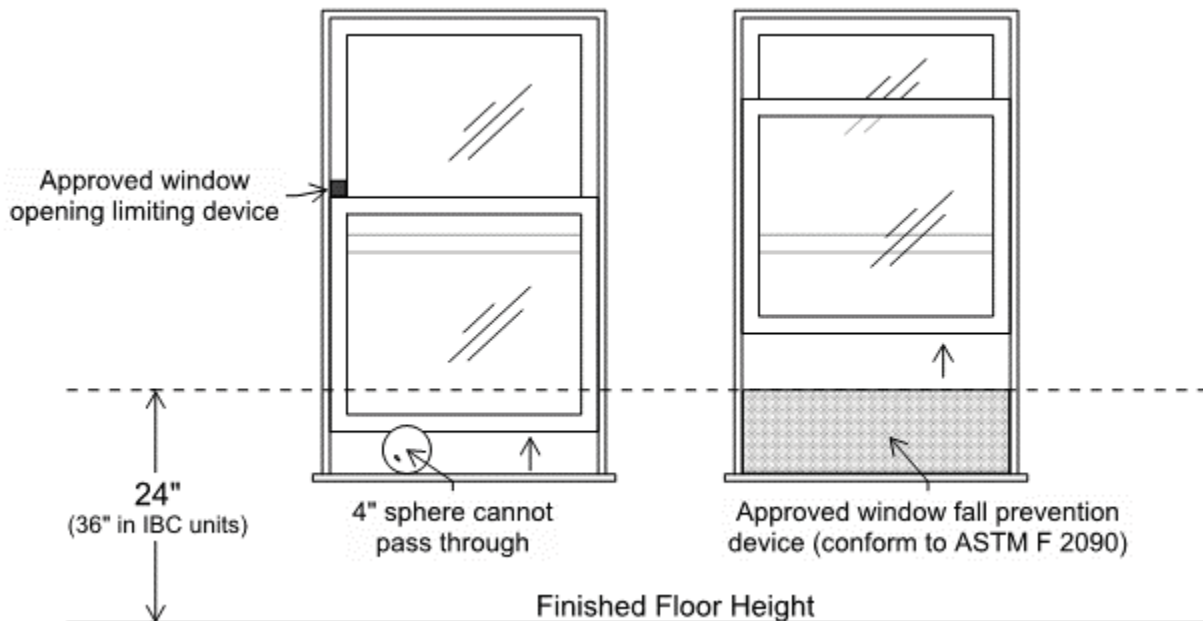
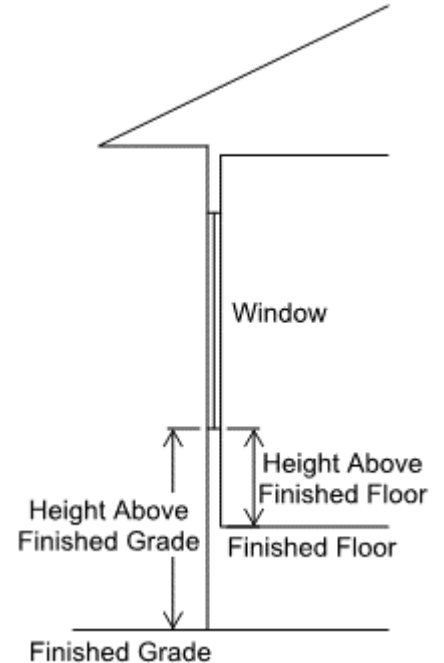


This Tip Sheet reflects code requirements of the 2015 International Residential Code (IRC) and the 2015 International Building Code (IBC) with Washington State Amendments.

**Window fall protection:** Where the sill height above finished grade on the exterior side of an operable window opening is greater than 72 inches, and the sill height above the finished floor on the interior side of the operable window opening is less than 24 inches (or 36 inches in dwelling units regulated by the IBC), then window fall protection shall be provided by one of the following:

1. Operable windows with openings that, when in their largest opened position, will not allow the passage of a 4 inch sphere.
2. Operable windows that are provided with window fall prevention devices that comply with ASTM F 2090.
3. Operable windows that are provided with opening control devices that comply with ASTM F 2090. (Note: When installed on required emergency egress windows, these devices must not reduce the net clear opening to less than the minimum required size or dimensions. See Tip Sheet 10.)
4. In dwelling units regulated by the IBC where the sill height of an operable window above exterior finished grade is more than 75 feet, provide window fall prevention devices complying with ASTM F 2006.



GENERAL INFORMATION:

- The intent of this Tip Sheet is to provide a general understanding of the code requirements and does not address the subject in great detail.

Exterior Sill Height Above Finished Grade	Interior Sill Height Above Finished Floor (X)	Can be used for Egress	Safety Glazing Required (see Tip Sheet 19)	Fall Protection Required
72 inches or less	$X > 44"$	No	-	No
	$18" \leq X \leq 44"$	Yes	-	No
	Sill below 18", top of window above 36", and individual pane of glass is > 9 sf	Yes	Yes	No
Greater than 72 inches	$X > 44"$	No	-	No
	$24" \leq X \leq 44"$ (IRC dwelling units)	Yes	-	No
	$X < 24"$ (IRC dwelling units)	Yes	-	Yes
	$36" \leq X \leq 44"$ (IBC dwelling units)	Yes	-	No
	$X < 36"$ (IBC dwelling units)	Yes	-	Yes
	Sill below 18", top of window above 36", and individual pane of glass is > 9 sf	Yes	Yes	Yes
Greater than 75 feet	$X < 36"$ (IBC dwelling units)	No	-	Yes (per ASTM F 2006)

**Egress Windows:** Egress windows must meet minimum size requirements. Minimum clear opening size of 5.7 square feet (5 square feet on the grade level) with minimum clear height of 24 inches and minimum clear width of 20 inches. For additional emergency egress window requirements refer to Tip Sheet 10.

**Safety Glazing:** For additional safety glazing requirements refer to Tip Sheet 19.

**ASTM F 2006:** Standard Safety Specification for Window Fall Prevention Devices for Non-Emergency Escape (Egress) and Rescue (Ingress) Windows.

**ASTM F 2090:** Specification for Window Fall Prevention Devices with Emergency Escape (Egress) Release Mechanisms.

**GENERAL INFORMATION:**

- The intent of this Tip Sheet is to provide a general understanding of the code requirements and does not address the subject in great detail.